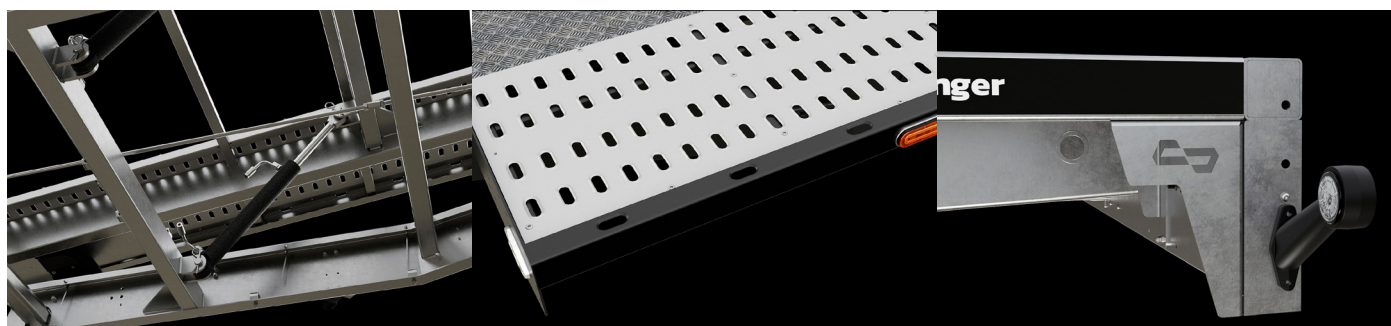




## TRIMAXLIFT - 35

Trailer with overrun brake



### Standard equipment

- |  |                                |
|--|--------------------------------|
| · Overrun/parking brake                        | · Manual winch                 |
| · Wedge for blocking wheels of the car trailer | · Single-acting hydraulic pump |
| · Support wheel                                | · LED lighting                 |
| · Axle shock absorbers                         |                                |

### Optional equipment

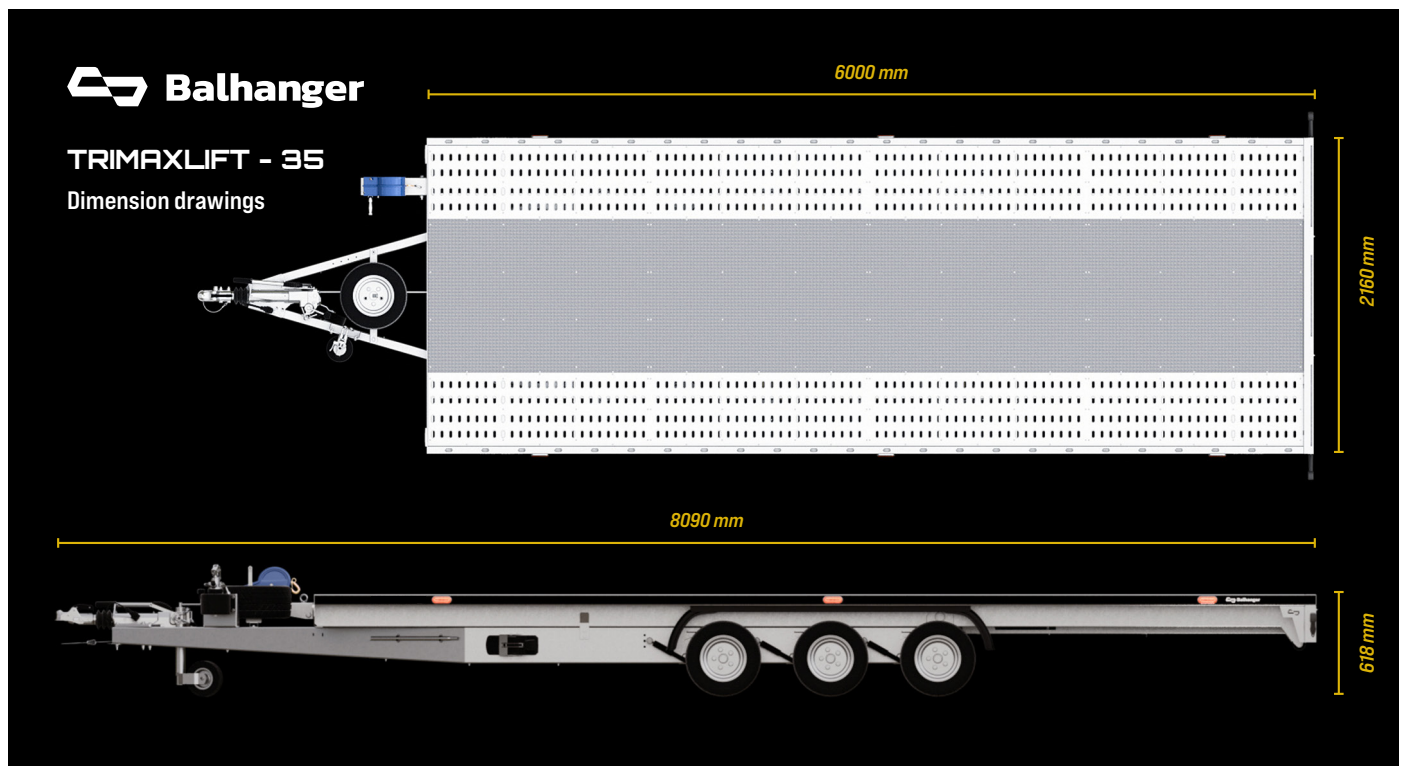
- |                             |                                |
|-----------------------------|--------------------------------|
| · Powder coated elements    | · Manual winch AL-KO           |
| · Spare wheel with mounting | · Double-acting hydraulic pump |
| · Automatic support wheel   | · Aluminum floor filling       |
| · Locking wedges, set       | · Aluminium rims               |

**Follow  
your lead**



**Specification**

Series	Cargo dimensions[mm]	External dimensions (L x W x H) [mm]	PMW [kg]	Tare weight [kg]	Max cargo capacity [kg]	Type of wheels	Load angle
TRIMAXLIFT 3060 TRIMAXLIFT 3560	6000 x 2160	8090 x 2160 x 618	3000 3500	925 925	2075 2575	R10	11°



[www.balhanger.com](http://www.balhanger.com)  
[balhanger@balhanger.com](mailto:balhanger@balhanger.com)